

Applications:

- Roadway & Area Lighting

Design Details

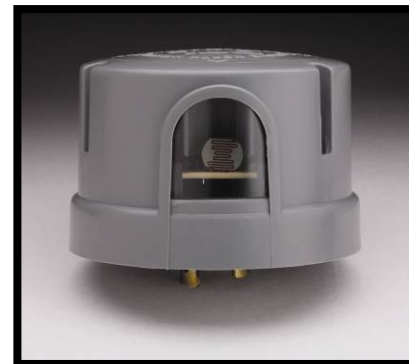
- Cadmium Sulfide Light Sensor
- Sealed Relay
- MOV Rated for up to 320 Joule/9500 Amp
- Neoprene Base Gasket has a continuous use temperature of 105°C
- Turn OFF light level is 1.5 times turn ON
- Optional 2 – 5 second turn-off delay
- Selectable Cover Color
- Polypropylene Cover
- Brass Legs
- Not approved for use on LED fixtures

Regulatory Listings

- ANSI C136.10-1996 Compliant

Operating Characteristics

- Voltage 105 to 305 VAC, 50/60Hz
- Load rating: 1000 watts, 1800 VA ballast
- -40 to +70°C ambient



Six Year Warranty: The D series controls are warranted to be free of manufacturing quality defects for a period of (6) years from the date of sale.

ORDERING INFORMATION

Example: D120 1.5 STJBK J50

Series Code & Voltage	Turn-on Level (ftc)	Light Sensor	Time Delay (seconds)	Surge Protection	Cover Color (See Chart)	Package Qty.
D120 120 Volts (105-130)	1.0 Energy Saver	S Standard Cadmium Sulfide	(blank) Instant on and off T 2 – 5 Sec. turn-off Delay	M 160J/6500 amp MOV (standard) J 320J/9500 amp MOV	(blank) ANSI Std. Color BK Black BR Brown P Upward Facing	J12 12 Units
D124 120/240/277 Volts (105-305)	1.5 ANSI Standard					J50 50 Units
D240 240 volts (205-265)	2.6 IES Recommendation					

ANSI Color Codes	
120V	Gray
240V	Maroon
Multi-Volt	Dark Blue
347V	Green
480V	Yellow

Sheet # DTL-D-B

