

Applications:

- Street & Area Lighting
- Security Lighting
- Yard Lighting

Design Details

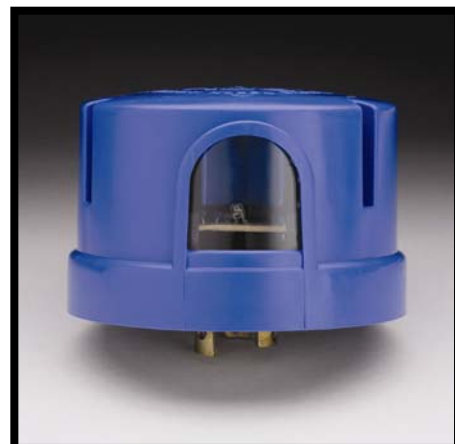
- Silicon Light Sensor
- Custom Designed Sealed Relay
- MOV Rated for 160 Joule/6500 Amp
- Neoprene Base Gasket has a continuous use temperature of 105°C
- Built In 2 – 5 second turn-off delay
- Cover Color Per ANSI
- Polypropylene Cover
- Brass Legs
- Not approved for use on LED fixtures

Regulatory Listings

- ANSI C136.10-1996 Compliant
- UL Recognized
- ROHS compliant

Operating Characteristics

- Voltage 105 to 530 VAC, 60Hz
- Load rating: 1000 watts, 1800 VA ballast
- -40 to +70°C ambient



Six Year Warranty: The DUX series controls are warranted to be free of manufacturing quality defects for a period of (6) years from the date of sale.

ORDERING INFORMATION

Example: DUX124 12A J50

Series Code & Voltage	Turn-on Level (ftc)	Sensor	Cover Color (see chart)	Package Qty.
DUX120 120 Volts (105-130)	1 1.0 – 2.0 FTC Turn-on	2 Silicon Sensor, Time Delay (2-5 seconds)	A ANSI Standard	J12 12 Units
DUX124 120/240/277 Volts (105-305)			P Upward Facing	J50 50 Units
DUX480 480 Volts (420-530)				

ANSI Color Codes	
120V	Gray
240V	Maroon
Multi-Volt	Dark Blue
347V	Green
480V	Yellow

